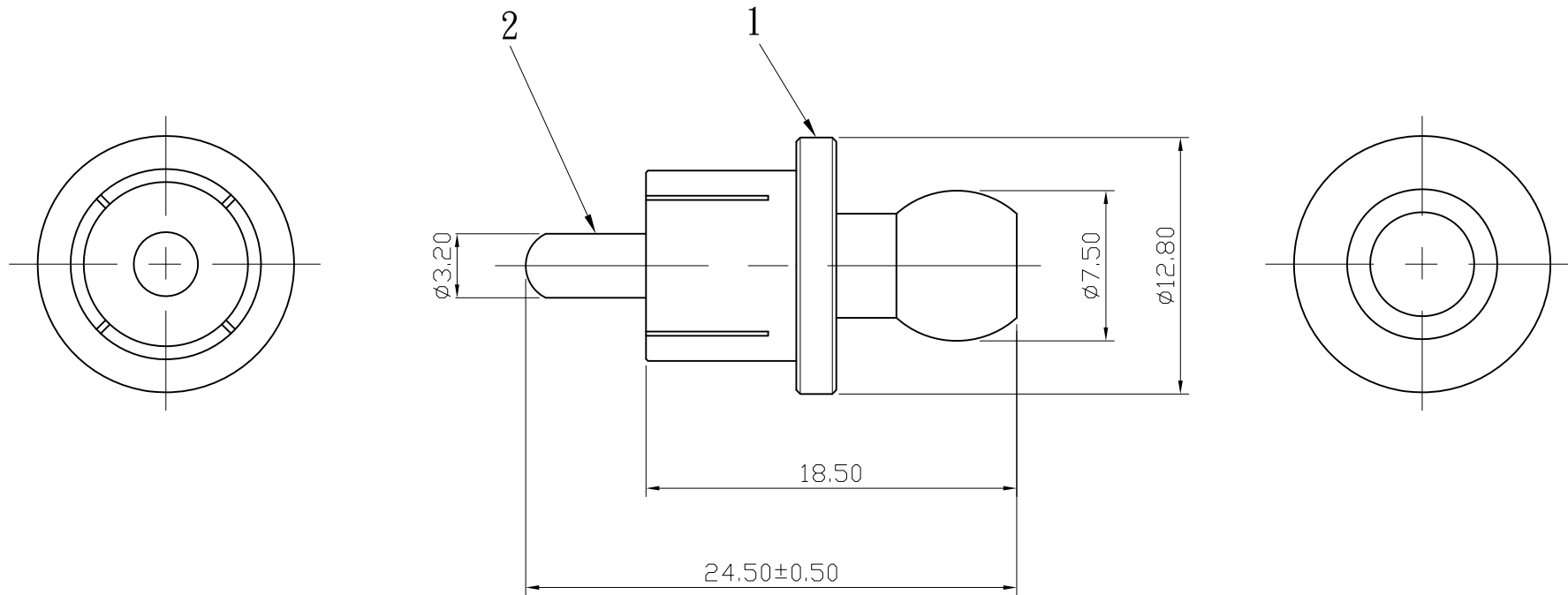


REMARK : RoHS REQUIREMENT APPLIED
(符合RoHS)

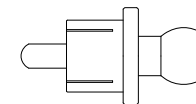


NOTE :


The RCA Caps have a special Center Pin which helps prevent RFI/EMI contamination.

If you are placing these RCA Caps on any OUTPUT RCA jacks - YOU MUST REMOVE THE CENTER PIN.

You can use the pin on any INPUT RCA jacks without any risk.



S 1 : 1

7						DIMENSIONS ARE IN MILLIMETERS	CHECKED	 雅鈦企業有限公司 Aec Connectors Co., Ltd.	
6									TITLE
5						UNLESS OTHERWISE SPECIFIED TOLERANCES (一般公差) 0.5~6 = ±0.2 >6~30 = ±0.4 >30~120 = ±0.6 >120~315 = ±1 >315~1000 = ±1.6 ANGLES(角度) = ±5°	DRAWN	DRAWING NO.	
4							<i>Jordan</i>	CAP-RJ-103G	
3							DATE	FILE NO. DRAWING\AUDIO\CAP\CAP-RJ-103G	
2	contact pin	1	brass	gold			2016. 05. 11		
1	body	1	brass	gold					
NO.	Description	Unit	Materials	Finish	Drawing No.	SCALE	3 : 1	UNIT	MM